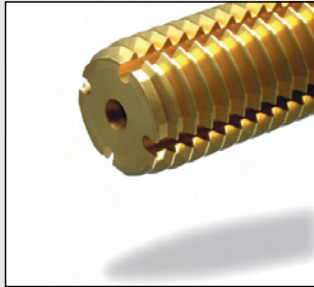


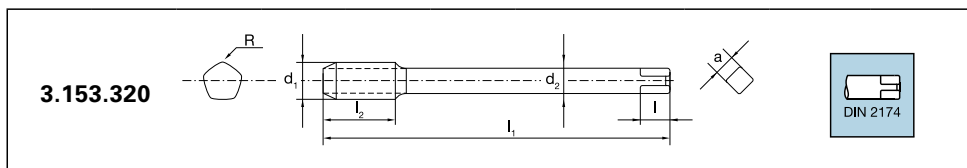
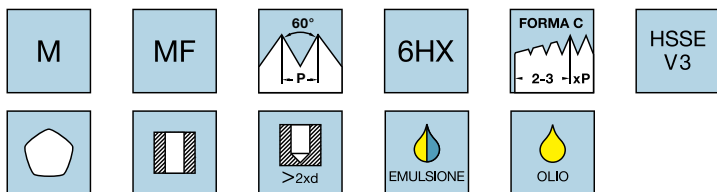
MASCHI A RULLARE





- Acciaio
≤ 500
N/mm²
- Acciaio
500-800
N/mm²
- Acciaio
800-1200
N/mm²
- Acciaio
INOX
- ALU
- ALU
Si <10%
- CU

MASCHI A RULLARE



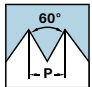
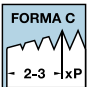
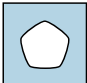
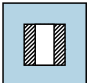
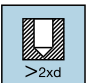


d ₁	P	l ₁	l ₂	l ₃	d ₂	l	a	R	Codice	€
M2	●0.40	45	8	10	2.8	5	2.1	4	650.065	16,85
M2.5	●0.45	50	9	12.5	2.8	5	2.1	4	650.080	16,85
M3	●0.35	56	8	18	3.5	6	2.7	4	650.086	33,70
M3	●0.50	56	11	18	3.5	6	2.7	4	650.090	12,88
M4	●0.50	63	10	21	4.5	6	3.4	4	650.097	34,35
M4	●0.70	63	13	21	4.5	6	3.4	4	650.100	12,88
M5	●0.50	70	12	25	6.0	8	4.9	4	650.106	36,80
M5	●0.80	70	16	25	6.0	8	4.9	4	650.110	14,13
M6	●0.75	80	14	30	6.0	8	4.9	4	650.112	38,20
M6	●1.00	80	19	30	6.0	8	4.9	4	650.115	14,63
M8	●1.00	90	22	35	8.0	9	6.2	6	650.123	38,85
M8	●1.25	90	22	35	8.0	9	6.2	6	650.125	16,85
M10	●1.00	90	20	35	8.0	11	8.0	8	650.132	38,20
M10	●1.50	100	24	39	10.0	11	8.0	8	650.135	21,35

- METRICO
- METRICO FINE

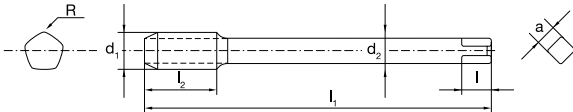


Acciaio ≤ 500 N/mm ²	Acciaio 500-800 N/mm ²
Acciaio 800-1200 N/mm ²	Acciaio INOX
ALU	ALU Si <10%
	CU

MASCHI A RULLARE

M	MF		6HX		HSSE V3
					

3.153.320



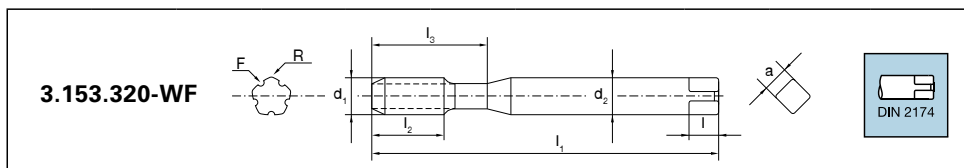
d ₁	P	l ₁	l ₂	l ₃	d ₂	l	a	R	Codice	€
M12	● 1.50	100	22	40	9.0	10	7.0	8	650.143	43,10
M12	● 1.75	110	28	44	9.0	10	7.0	8	650.145	43,80
M14	● 2.00	110	30	44	11.0	12	9.0	8	650.150	58,30
M16	● 1.50	100	22	40	12.0	12	9.0	8	650.152	72,20
M16	● 2.00	110	32	44	12.0	12	9.0	8	650.155	67,30
● METRICO										
● METRICO FINE										



Acciaio ≤ 500 N/mm ²	Acciaio 500-800 N/mm ²
Acciaio 800-1200 N/mm ²	Acciaio INOX
ALU	ALU Si <10%
	CU

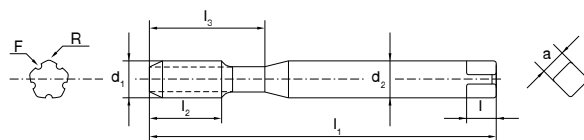
MASCHI A RULLARE

M	MF		6HX		HSSE V3



d ₁	P	l ₁	l ₂	l ₃	d ₂	l	a	R / F	Codice	€
M2	●0.40	45	8	10	2.8	5	2.1	4 / 2	655.065	18,65
M2.5	●0.45	50	9	12.5	2.8	5	2.1	4 / 2	655.080	18,65
M3	●0.35	56	8	18	3.5	6	2.7	4 / 2	655.086	38,85
M3	●0.50	56	11	18	3.5	6	2.7	4 / 2	655.090	14,37
M4	●0.50	63	10	21	4.5	6	3.4	4 / 2	655.097	38,20
M4	●0.70	63	13	21	4.5	6	3.4	4 / 2	655.100	14,37
M5	●0.50	70	12	25	6.0	8	4.9	4 / 2	655.106	41,70
M5	●0.80	70	16	25	6.0	8	4.9	4 / 2	655.110	15,40
M6	●0.75	80	14	30	6.0	8	4.9	4 / 2	655.112	41,70
M6	●1.00	80	19	30	6.0	8	4.9	4 / 2	655.115	15,90
M8	●1.00	90	22	35	8.0	9	6.2	6 / 3	655.123	41,00
M8	●1.25	90	22	35	8.0	9	6.2	6 / 3	655.125	18,60
M10	●1.00	90	20	35	8.0	11	8.0	8 / 4	655.132	43,10
M10	●1.50	100	24	39	10.0	11	8.0	8 / 4	655.135	23,55

- METRICO
- METRICO FINE

3.153.320-WF


d_1	P	l_1	l_2	l_3	d_2	l	a	R / F	Codice	€
M12	● 1.50	100	22	40	9.0	10	7.0	8 / 4	655.143	47,20
M12	● 1.75	110	28	44	9.0	10	7.0	8 / 4	655.145	47,90
M14	● 2.00	110	30	44	11.0	12	9.0	8 / 4	655.150	62,50
M16	● 1.50	100	22	40	12.0	12	9.0	8 / 4	655.152	79,10
M16	● 2.00	110	32	44	12.0	12	9.0	8 / 4	655.155	73,60

● METRICO

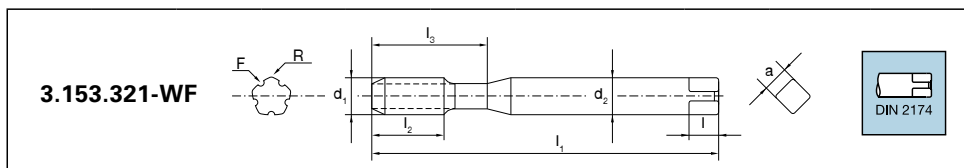
● METRICO FINE



Acciaio ≤ 500 N/mm ²	Acciaio 500-800 N/mm ²
Acciaio 800-1200 N/mm ²	Acciaio INOX
ALU	ALU Si <10%
	CU

MASCHI A RULLARE

M	MF		6HX		OX HSSE V3

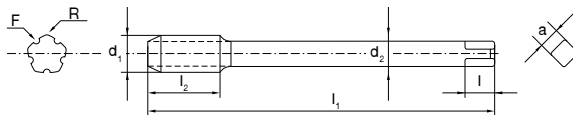


d ₁	P	l ₁	l ₂	l ₃	d ₂	l	a	R / F	Codice	€
M2	●0.40	45	8	10	2.8	5	2.1	4 / 2	656.065	18,65
M2.5	●0.45	50	9	12.5	2.8	5	2.1	4 / 2	656.080	18,65
M3	●0.35	56	8	18	3.5	6	2.7	4 / 2	656.086	38,85
M3	●0.50	56	11	18	3.5	6	2.7	4 / 2	656.090	14,37
M3.5	●0.60	56	12	20	4	6	3.0	4 / 2	656.095	15,40
M4	●0.50	63	10	21	4.5	6	3.4	4 / 2	656.097	38,20
M4	●0.70	63	13	21	4.5	6	3.4	4 / 2	656.100	14,37
M5	●0.50	70	12	25	6.0	8	4.9	4 / 2	656.106	41,70
M5	●0.80	70	16	25	6.0	8	4.9	4 / 2	656.110	15,40
M6	●0.75	80	14	30	6.0	8	4.9	4 / 2	656.112	41,70
M6	●1.00	80	19	30	6.0	8	4.9	4 / 2	656.115	15,90
M8	●1.00	90	22	35	8.0	9	6.2	6 / 3	656.123	41,00
M8	●1.25	90	22	35	8.0	9	6.2	6 / 3	656.125	18,60
M10	●1.00	90	20	35	8.0	11	8.0	8 / 4	656.132	43,10
M10	●1.50	100	24	39	10.0	11	8.0	8 / 4	656.135	23,55

● METRICO

● METRICO FINE

3.153.321-WF



d ₁	P	l ₁	l ₂	l ₃	d ₂	l	a	R / F	Codice	€
M12	● 1.50	100	22	40	9.0	10	7.0	8 / 4	656.143	47,20
M12	● 1.75	110	28	44	9.0	10	7.0	8 / 4	656.145	47,90
M14	● 2.00	110	30	44	11.0	12	9.0	8 / 4	656.150	62,50
M16	● 1.50	100	22	40	12.0	12	9.0	8 / 4	656.152	79,10
M16	● 2.00	110	32	44	12.0	12	9.0	8 / 4	656.155	73,60

● METRICO

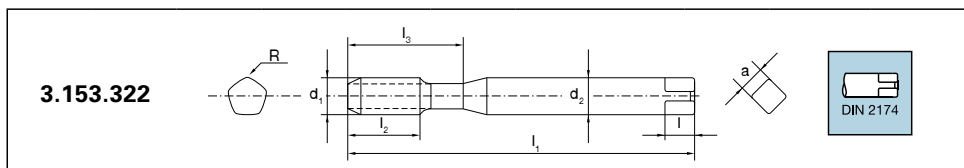
● METRICO FINE



Acciaio ≤ 500 N/mm ²	Acciaio 500-800 N/mm ²
Acciaio 800-1200 N/mm ²	Acciaio INOX
ALU	ALU Si <10%
	CU

MASCHI A RULLARE

M	MF	60° P	6HX	FORMA C 2-3 xP	TiN HSSE V3
		>2xd	OLIO	EMULSIONE	



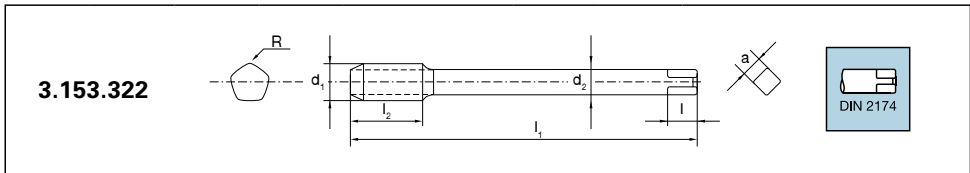
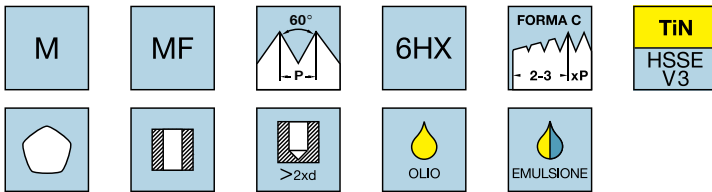
d ₁	P	l ₁	l ₂	l ₃	d ₂	l	a	R	Codice	€
M2	●0.40	45	8	10	2.8	5	2.1	4	660.065	20,85
M2.5	●0.45	50	9	12.5	2.8	5	2.1	4	660.080	19,85
M3	●0.35	56	8	18	3.5	6	2.7	4	660.086	38,85
M3	●0.50	56	11	18	3.5	6	2.7	4	660.090	16,85
M4	●0.50	63	10	21	4.5	6	3.4	4	660.097	39,55
M4	●0.70	63	13	21	4.5	6	3.4	4	660.100	16,85
M5	●0.50	70	12	25	6.0	8	4.9	4	660.106	43,80
M5	●0.80	70	16	25	6.0	8	4.9	4	660.110	18,10
M6	●0.75	80	14	30	6.0	8	4.9	4	660.112	43,80
M6	●1.00	80	19	30	6.0	8	4.9	4	660.115	18,60
M8	●1.00	90	22	35	8.0	9	6.2	6	660.123	45,80
M8	●1.25	90	22	35	8.0	9	6.2	6	660.125	21,80
M10	●1.00	90	20	35	8.0	11	8.0	8	660.132	45,80
M10	●1.50	100	24	39	10.0	11	8.0	8	660.135	27,75

- METRICO
- METRICO FINE



- Acciaio ≤ 500 N/mm²
- Acciaio 500-800 N/mm²
- Acciaio 800-1200 N/mm²
- Acciaio INOX
- ALU
- ALU Si <10%
- CU

MASCHI A RULLARE

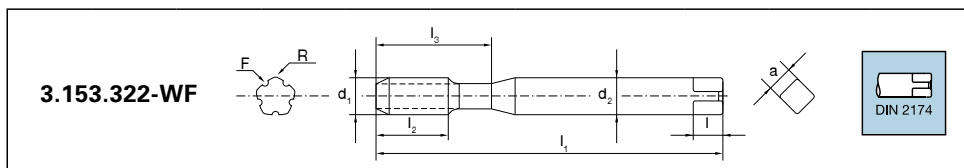
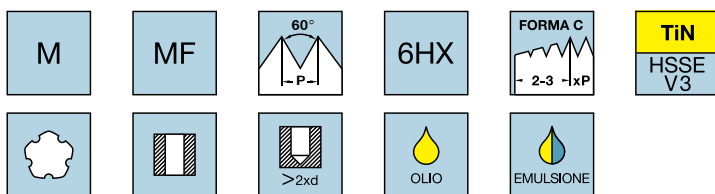


d ₁	P	l ₁	l ₂	l ₃	d ₂	l	a	R	Codice	€
M12	● 1.50	100	22	40	9.0	10	7.0	8	660.143	52,10
M12	● 1.75	110	28	44	9.0	10	7.0	8	660.145	53,50
M14	● 2.00	110	30	44	11.0	12	9.0	8	660.150	69,40
M16	● 1.50	100	22	40	12.0	12	9.0	8	660.152	87,50
M16	● 2.00	110	32	44	12.0	12	9.0	8	660.155	75,00
● METRICO										
● METRICO FINE										



Acciaio ≤ 500 N/mm ²	Acciaio 500-800 N/mm ²
Acciaio 800-1200 N/mm ²	Acciaio INOX
ALU	ALU Si <10%
	CU

MASCHI A RULLARE



d ₁	P	l ₁	l ₂	l ₃	d ₂	l	a	R / F	Codice	€
M2	●0.40	45	8	10	2.8	5	2.1	4 / 2	665.065	39,55
M2.5	●0.45	50	9	12.5	2.8	5	2.1	4 / 2	665.080	39,55
M3	●0.35	56	8	18	3.5	6	2.7	4 / 2	665.086	55,00
M3	●0.50	56	11	18	3.5	6	2.7	4 / 2	665.090	37,15
M4	●0.50	63	10	21	4.5	6	3.4	4 / 2	665.097	38,30
M4	●0.70	63	13	21	4.5	6	3.4	4 / 2	665.100	56,00
M5	●0.50	70	12	25	6.0	8	4.9	4 / 2	665.106	39,05
M5	●0.80	70	16	25	6.0	8	4.9	4 / 2	665.110	59,50
M6	●0.75	80	14	30	6.0	8	4.9	4 / 2	665.112	43,10
M6	●1.00	80	19	30	6.0	8	4.9	4 / 2	665.115	59,50
M8	●1.00	90	22	35	8.0	9	6.2	6 / 3	665.123	51,90
M8	●1.25	90	22	35	8.0	9	6.2	6 / 3	665.125	62,60
M10	●1.00	90	20	35	8.0	11	8.0	8 / 4	665.132	69,20
M10	●1.50	100	24	39	10.0	11	8.0	8 / 4	665.135	65,10

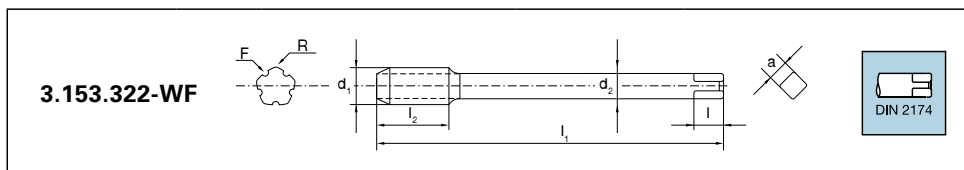
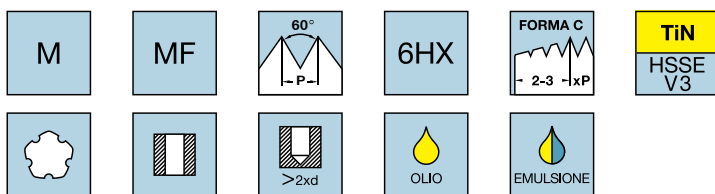
● METRICO

● METRICO FINE



- Acciaio ≤ 500 N/mm²
- Acciaio 500-800 N/mm²
- Acciaio 800-1200 N/mm²
- Acciaio INOX
- ALU
- ALU Si <10%
- CU

MASCHI A RULLARE



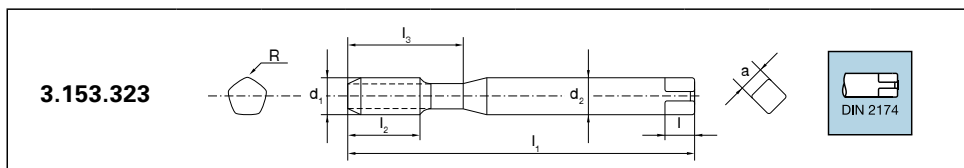
d ₁	P	l ₁	l ₂	l ₃	d ₂	l	a	R / F	Codice	€
M12	● 1.50	100	22	40	9.0	10	7.0	8 / 4	665.143	89,60
M12	● 1.75	110	28	44	9.0	10	7.0	8 / 4	665.145	72,80
M14	● 2.00	110	30	44	11.0	12	9.0	8 / 4	665.150	109,50
M16	● 1.50	100	22	40	12.0	12	9.0	8 / 4	665.152	91,10
M16	● 2.00	110	32	44	12.0	12	9.0	8 / 4	665.155	103,50
● METRICO										
● METRICO FINE										



Acciaio ≤ 500 N/mm ²	Acciaio 500-800 N/mm ²
Acciaio 800-1200 N/mm ²	Acciaio INOX
ALU	ALU Si <10%
	CU

MASCHI A RULLARE

M	MF		6HX		TICN HSSE V3



d ₁	P	l ₁	l ₂	l ₃	d ₂	l	a	R	Codice	€
M2	●0.40	45	8	10	2.8	5	2.1	4	670.065	21,35
M2.5	●0.45	50	9	12.5	2.8	5	2.1	4	670.080	21,35
M3	●0.35	56	8	18	3.5	6	2.7	4	670.086	39,55
M3	●0.50	56	11	18	3.5	6	2.7	4	670.090	17,35
M4	●0.50	63	10	21	4.5	6	3.4	4	670.097	40,30
M4	●0.70	63	13	21	4.5	6	3.4	4	670.100	17,35
M5	●0.50	70	12	25	6.0	8	4.9	4	670.106	42,40
M5	●0.80	70	16	25	6.0	8	4.9	4	670.110	18,60
M6	●0.75	80	14	30	6.0	8	4.9	4	670.112	44,40
M6	●1.00	80	19	30	6.0	8	4.9	4	670.115	19,10
M8	●1.00	90	22	35	8.0	9	6.2	6	670.123	44,40
M8	●1.25	90	22	35	8.0	9	6.2	6	670.125	22,30
M10	●1.00	90	20	35	8.0	11	8.0	8	670.132	47,90
M10	●1.50	100	24	39	10.0	11	8.0	8	670.135	28,75

- METRICO
- METRICO FINE



Acciaio
≤ 500
N/mm²

Acciaio
500-800
N/mm²

Acciaio
800-1200
N/mm²

Acciaio
INOX

ALU

ALU
Si <10%

CU

MASCHI A RULLARE

M

MF



6HX



TICN
HSSE
V3

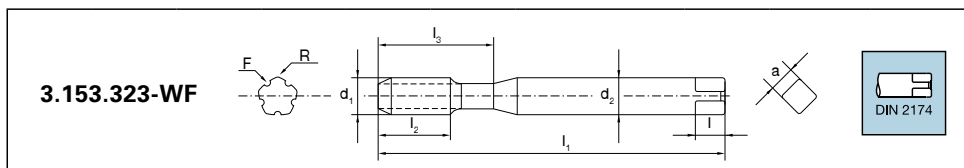
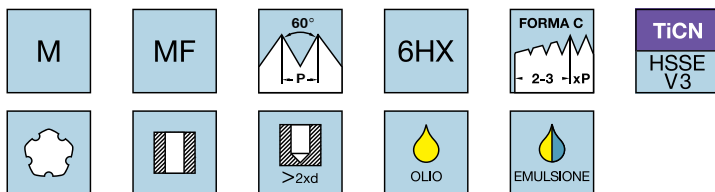


3.153.323										
d ₁	P	I ₁	I ₂	I ₃	d ₂	l	a	R	Codice	€
M12	● 1.50	100	22	40	9.0	10	7.0	8	670.143	53,50
M12	● 1.75	110	28	44	9.0	10	7.0	8	670.145	54,90
M14	● 2.00	110	30	44	11.0	12	9.0	8	670.150	70,80
M16	● 1.50	100	22	40	12.0	12	9.0	8	670.152	88,90
M16	● 2.00	110	32	44	12.0	12	9.0	8	670.155	84,00
● METRICO										
● METRICO FINE										



Acciaio ≤ 500 N/mm ²	Acciaio 500-800 N/mm ²
Acciaio 800-1200 N/mm ²	Acciaio INOX
ALU	ALU Si <10%
	CU

MASCHI A RULLARE



d ₁	P	l ₁	l ₂	l ₃	d ₂	l	a	R / F	Codice	€
M2	●0.40	45	8	10	2.8	5	2.1	4 / 2	675.065	23,10
M2.5	●0.45	50	9	12.5	2.8	5	2.1	4 / 2	675.080	23,10
M3	●0.35	56	8	18	3.5	6	2.7	4 / 2	675.086	43,10
M3	●0.50	56	11	18	3.5	6	2.7	4 / 2	675.090	18,85
M4	●0.50	63	10	21	4.5	6	3.4	4 / 2	675.097	43,80
M4	●0.70	63	13	21	4.5	6	3.4	4 / 2	675.100	18,85
M5	●0.50	70	12	25	6.0	8	4.9	4 / 2	675.106	45,80
M5	●0.80	70	16	25	6.0	8	4.9	4 / 2	675.110	19,85
M6	●0.75	80	14	30	6.0	8	4.9	4 / 2	675.112	47,90
M6	●1.00	80	19	30	6.0	8	4.9	4 / 2	675.115	20,35
M8	●1.00	90	22	35	8.0	9	6.2	6 / 3	675.123	48,60
M8	●1.25	90	22	35	8.0	9	6.2	6 / 3	675.125	24,05
M10	●1.00	90	20	35	8.0	11	8.0	8 / 4	675.132	53,50
M10	●1.50	100	24	39	10.0	11	8.0	8 / 4	675.135	31,00

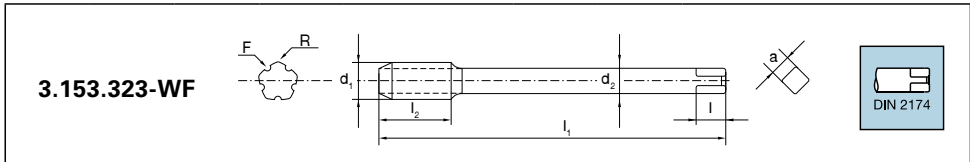
- METRICO
- METRICO FINE



Acciaio ≤ 500 N/mm ²	Acciaio 500-800 N/mm ²
Acciaio 800-1200 N/mm ²	Acciaio INOX
ALU	ALU Si <10%
	CU

MASCHI A RULLARE

M	MF		6HX		TICN HSSE V3



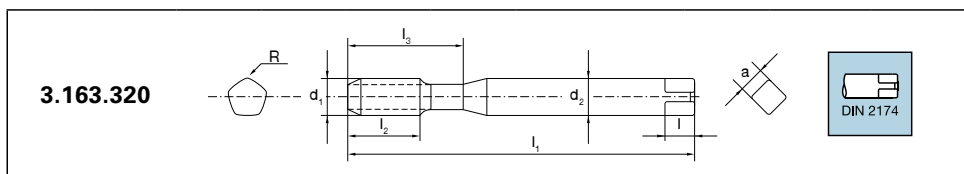
d ₁	P	I ₁	I ₂	I ₃	d ₂	l	a	R / F	Codice	€
M12	● 1.50	100	22	40	9.0	10	7.0	8 / 4	675.143	58,30
M12	● 1.75	110	28	44	9.0	10	7.0	8 / 4	675.145	59,00
M14	● 2.00	110	30	44	11.0	12	9.0	8 / 4	675.150	75,00
M16	● 1.50	100	22	40	12.0	12	9.0	8 / 4	675.152	94,40
M16	● 2.00	110	32	44	12.0	12	9.0	8 / 4	675.155	90,20
● METRICO										
● METRICO FINE										



Acciaio ≤ 500 N/mm ²	Acciaio 500-800 N/mm ²
Acciaio 800-1200 N/mm ²	Acciaio INOX
ALU	ALU Si <10%
	CU

MASCHI A RULLARE

M	60° P	6GX	FORMA C 2-3 -xP	HSSE V3



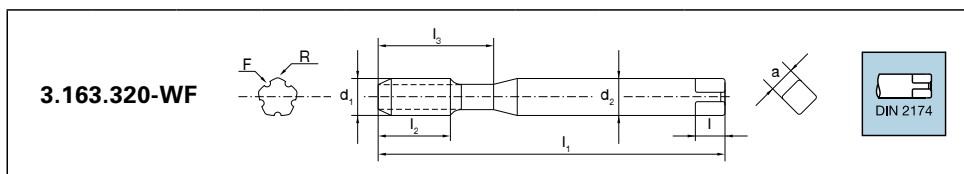
d ₁	P	l ₁	l ₂	l ₃	d ₂	l	a	R	Codice	€
M2	0.40	45	8	10	2.8	5	2.1	4	680.065	17,90
M2.5	0.45	50	9	12.5	2.8	5	2.1	4	680.080	17,85
M3	0.50	56	11	18	3.5	6	2.7	4	680.090	13,63
M4	0.70	63	13	21	4.5	6	3.4	4	680.100	13,65
M5	0.80	70	16	25	6.0	8	4.9	4	680.110	14,86
M6	1.00	80	19	30	6.0	8	4.9	4	680.115	15,40
M8	1.25	90	22	35	8.0	9	6.2	6	680.125	17,15
M10	1.50	100	24	39	10.0	11	8.0	8	680.135	21,60



Acciaio ≤ 500 N/mm ²	Acciaio 500-800 N/mm ²
Acciaio 800-1200 N/mm ²	Acciaio INOX
ALU	ALU Si <10%
	CU

MASCHI A RULLARE

M		6GX	FORMA C - 2-3 -xP	HSSE V3



d ₁	P	l ₁	l ₂	l ₃	d ₂	l	a	R / F	Codice	€
M2	0.40	45	8	10	2.8	5	2.1	4 / 2	695.065	24,70
M2.5	0.45	50	9	12.5	2.8	5	2.1	4 / 2	695.080	24,70
M3	0.50	56	11	18	3.5	6	2.7	4 / 2	695.090	18,75
M4	0.70	63	13	21	4.5	6	3.4	4 / 2	695.100	18,75
M5	0.80	70	16	25	6.0	8	4.9	4 / 2	695.110	20,55
M6	1.00	80	19	30	6.0	8	4.9	4 / 2	695.115	21,45
M8	1.25	90	22	35	8.0	9	6.2	6 / 3	695.125	24,70
M10	1.50	100	24	39	10.0	11	8.0	8 / 4	695.135	29,75



Acciaio
≤ 500
N/mm²

Acciaio
500-800
N/mm²

Acciaio
800-1200
N/mm²

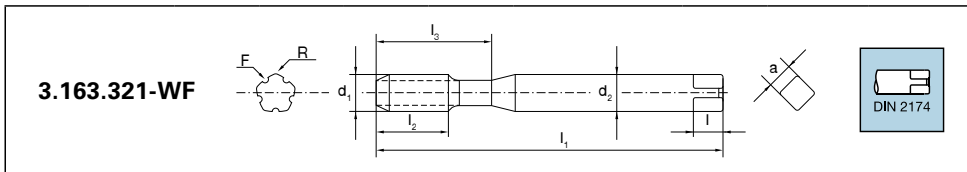
Acciaio
INOX

ALU

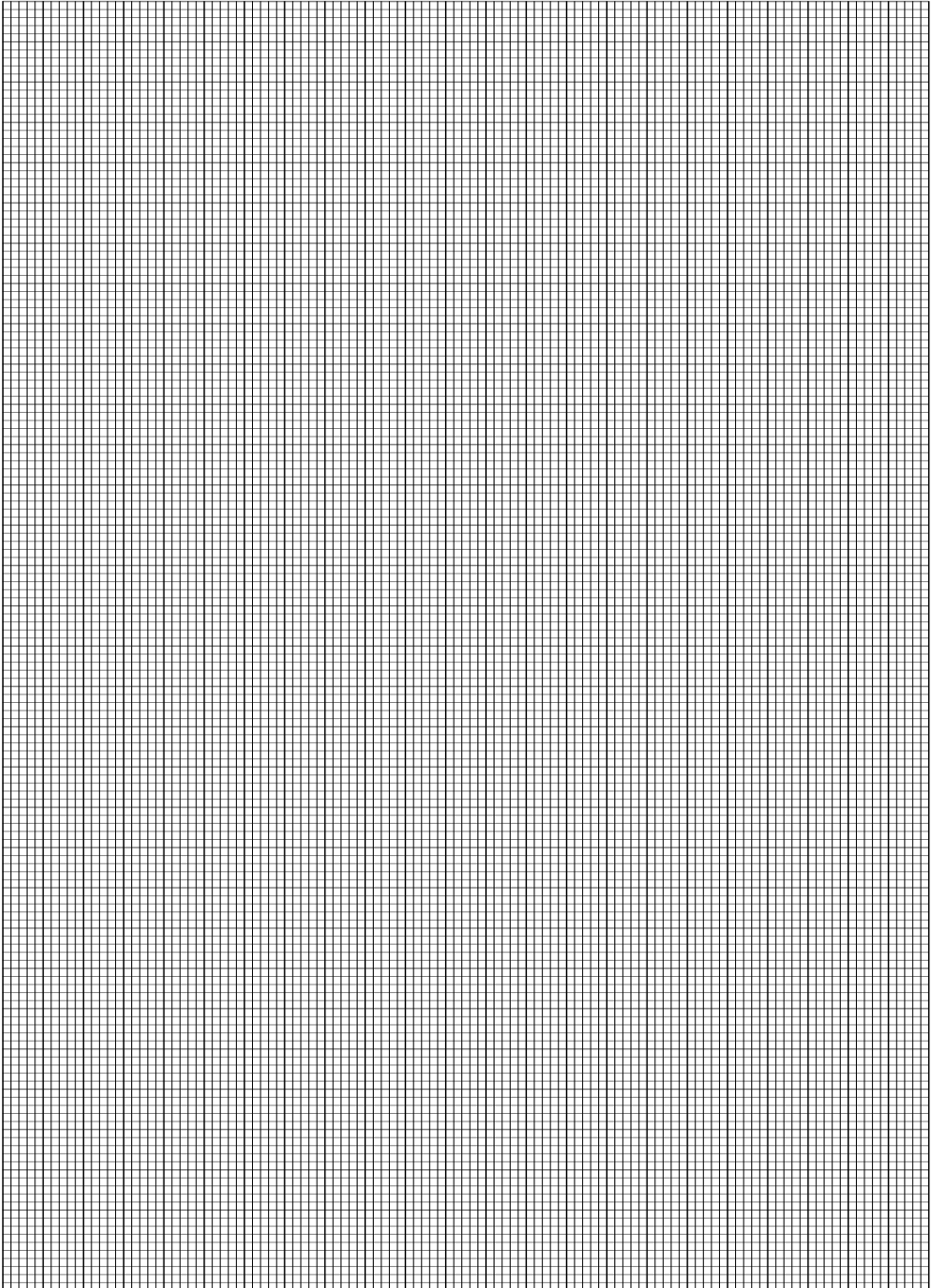
ALU
Si <10%

CU

MASCHI A RULLARE



d ₁	P	l ₁	l ₂	l ₃	d ₂	l	a	R / F	Codice	€
M2	0.40	45	8	10	2.8	5	2.1	4 / 2	696.065	24,70
M2.5	0.45	50	9	12.5	2.8	5	2.1	4 / 2	696.080	24,70
M3	0.50	56	11	18	3.5	6	2.7	4 / 2	696.090	18,75
M4	0.70	63	13	21	4.5	6	3.4	4 / 2	696.095	18,75
M5	0.80	70	16	25	6.0	8	4.9	4 / 2	696.100	20,55
M6	1.00	80	19	30	6.0	8	4.9	4 / 2	696.110	21,45
M8	1.25	90	22	35	8.0	9	6.2	6 / 3	696.115	24,70
M10	1.50	100	24	39	10.0	11	8.0	8 / 4	696.125	29,75

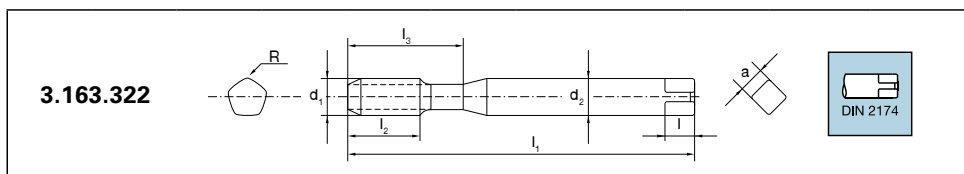




Acciaio ≤ 500 N/mm ²	Acciaio 500-800 N/mm ²
Acciaio 800-1200 N/mm ²	Acciaio INOX
ALU	ALU Si <10%
	CU

MASCHI A RULLARE

M	60° P	6GX	FORMA C 2-3 -xP	TiN HSSE V3

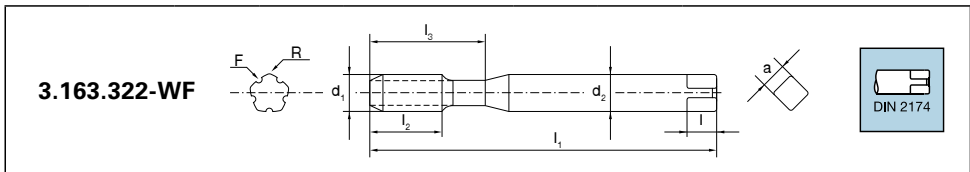
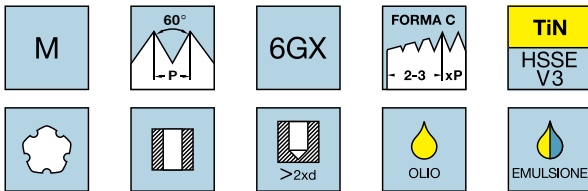


d ₁	P	l ₁	l ₂	l ₃	d ₂	l	a	R	Codice	€
M2	0.40	45	8	10	2.8	5	2.1	4	685.065	25,00
M2.5	0.45	50	9	12.5	2.8	5	2.1	4	685.080	25,00
M3	0.50	56	11	18	3.5	6	2.7	4	685.090	21,15
M4	0.70	63	13	21	4.5	6	3.4	4	685.100	21,15
M5	0.80	70	16	25	6.0	8	4.9	4	685.110	22,60
M6	1.00	80	19	30	6.0	8	4.9	4	685.115	23,20
M8	1.25	90	22	35	8.0	9	6.2	6	685.125	27,35
M10	1.50	100	24	39	10.0	11	8.0	8	685.135	34,50



Acciaio ≤ 500 N/mm ²	Acciaio 500-800 N/mm ²
Acciaio 800-1200 N/mm ²	Acciaio INOX
ALU	ALU Si <10%
	CU

MASCHI A RULLARE



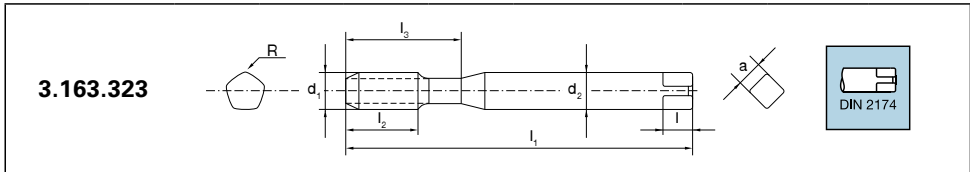
d ₁	P	l ₁	l ₂	l ₃	d ₂	l	a	R / F	Codice	€
M2	0.40	45	8	10	2.8	5	2.1	4 / 2	700.065	29,50
M2.5	0.45	50	9	12.5	2.8	5	2.1	4 / 2	700.080	29,50
M3	0.50	56	11	18	3.5	6	2.7	4 / 2	700.090	23,55
M4	0.70	63	13	21	4.5	6	3.4	4 / 2	700.100	23,55
M5	0.80	70	16	25	6.0	8	4.9	4 / 2	700.110	25,30
M6	1.00	80	19	30	6.0	8	4.9	4 / 2	700.115	26,20
M8	1.25	90	22	35	8.0	9	6.2	6 / 3	700.125	30,65
M10	1.50	100	24	39	10.0	11	8.0	8 / 4	700.135	38,65



Acciaio ≤ 500 N/mm ²	Acciaio 500-800 N/mm ²
Acciaio 800-1200 N/mm ²	Acciaio INOX
ALU	ALU Si <10%
	CU

MASCHI A RULLARE

M	60° P	6GX	FORMA C 2-3 -xP	TiCN HSSE V3



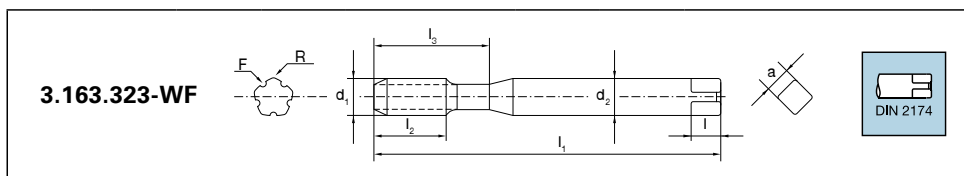
d ₁	P	l ₁	l ₂	l ₃	d ₂	l	a	R	Codice	€
M2	0.40	45	8	10	2.8	5	2.1	4	690.065	25,60
M2.5	0.45	50	9	12.5	2.8	5	2.1	4	690.080	25,60
M3	0.50	56	11	18	3.5	6	2.7	4	690.090	21,75
M4	0.70	63	13	21	4.5	6	3.4	4	690.100	21,75
M5	0.80	70	16	25	6.0	8	4.9	4	690.110	23,20
M6	1.00	80	19	30	6.0	8	4.9	4	690.115	23,80
M8	1.25	90	22	35	8.0	9	6.2	6	690.125	27,95
M10	1.50	100	24	39	10.0	11	8.0	8	690.135	35,70



Acciaio ≤ 500 N/mm ²	Acciaio 500-800 N/mm ²
Acciaio 800-1200 N/mm ²	Acciaio INOX
ALU	ALU Si <10%
	CU

MASCHI A RULLARE

M	60° P	6GX	FORMA C 2-3 -xP	TiCN HSSE V3
			 OLIO	 EMULSIONE



d ₁	P	l ₁	l ₂	l ₃	d ₂	l	a	R / F	Codice	€
M2	0.40	45	8	10	2.8	5	2.1	4 / 2	676.065	25,05
M2.5	0.45	50	9	12.5	2.8	5	2.1	4 / 2	676.080	25,05
M3	0.50	56	11	18	3.5	6	2.7	4 / 2	676.090	20,10
M4	0.70	63	13	21	4.5	6	3.4	4 / 2	676.100	20,10
M5	0.80	70	16	25	6.0	8	4.9	4 / 2	676.110	21,60
M6	1.00	80	19	30	6.0	8	4.9	4 / 2	676.115	22,30
M8	1.25	90	22	35	8.0	9	6.2	6 / 3	676.125	26,05
M10	1.50	100	24	39	10.0	11	8.0	8 / 4	676.135	33,20



Acciaio
≤ 500
N/mm²

Acciaio
500-800
N/mm²

Acciaio
800-1200
N/mm²

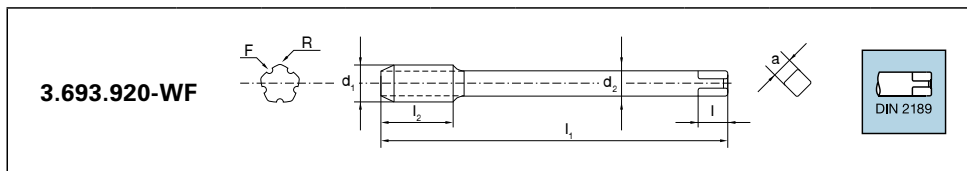
Acciaio
INOX

ALU

ALU
Si <10%

CU

MASCHI A RULLARE



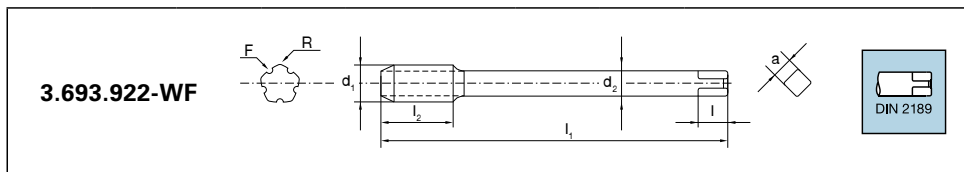
d ₁	Filetti x pollice	l ₁	l ₂	l ₃	d ₂	l	a	z	Codice	€
1/8	28	90	20		7.0	8	5.5	8 / 4	770.005	49,20
1/4	19	100	22		11.0	12	9	8 / 4	770.010	66,70
3/8	19	100	22		12.0	12	9	8 / 4	770.015	77,50



Acciaio ≤ 500 N/mm ²	Acciaio 500-800 N/mm ²
Acciaio 800-1200 N/mm ²	Acciaio INOX
ALU	ALU Si <10%
	CU

MASCHI A RULLARE

G	55° P	6HX	FORMA C 2-3 -xP	TiN HSSE V3
		>2xd	OLIO	EMULSIONE



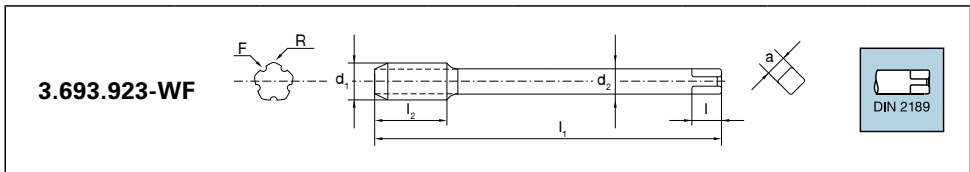
d ₁	Filetti x pollice	l ₁	l ₂	l ₃	d ₂	l	a	z	Codice	€
1/8	28	90	20		7.0	8	5.5	8 / 4	775.005	60,00
1/4	19	100	22		11.0	12	9	8 / 4	775.010	80,00
3/8	19	100	22		12.0	12	9	8 / 4	775.015	105,00



Acciaio ≤ 500 N/mm ²	Acciaio 500-800 N/mm ²
Acciaio 800-1200 N/mm ²	Acciaio INOX
ALU	ALU Si <10%
	CU

MASCHI A RULLARE

G	55° P	6HX	FORMA C - 2-3 -xP	TiCN HSSE V3
		>2xd	OLIO	EMULSIONE



d ₁	Filetti x pollice	l ₁	l ₂	l ₃	d ₂	l	a	z	Codice	€
1/8	28	90	20		7.0	8	5.5	8 / 4	780.005	59,20
1/4	19	100	22		11.0	12	9	8 / 4	780.010	81,60
3/8	19	100	22		12.0	12	9	8 / 4	780.015	113,50